



104 S. Hillsdale Street, P.O. Box 201  
Homer, MI 49245 • 517.568.3495  
www.homeracf.org • foundation@homeracf.org

# ANNUAL REPORT

FISCAL YEAR

**APRIL 1, 2010 - MARCH 31, 2011**

## **Our History**

The Homer Area Community Foundation (HACF) was founded as an affiliate of the Battle Creek Community Foundation in 1994.

HACF was created to serve as a catalyst to develop and administer permanent resources to address the needs of the Homer area.

**Since its humble beginnings, the Homer Area Community Foundation has grown to over 2 million dollars.**

The Homer Area Community Foundation continues to be funded through the generosity of caring donors who recognize the great variety of important needs in our community that can only be addressed by combining the resources of many individuals and organizations.

*The Mission of the Homer Area Community Foundation  
is to promote philanthropy within our community.  
We are committed to enhancing and improving the quality of life  
in the Homer area through the establishment and maintenance of a  
collection of permanently endowed funds.  
For good. For ever.*

# Homer Area Community Foundation Funds

The Homer Area Community Foundation is currently comprised of several funds, both endowed and non-endowed. In an endowed fund the principal is invested and grants and/or scholarships are awarded annually from a percentage of the yearly interest earned. Under Michigan law, contributions made to endowed funds are eligible for the Michigan Community Foundation tax credit through December 2011.

**A total of approximately \$100,000 was received in contributions this fiscal year.**

## ENDOWED FUNDS

### BESSIE EDWARDS EDUCATION FUND

Bessie Edwards was a life long resident of Homer who wished her bequest to be used for “the enrichment of educational programs.” All grants awarded from this fund go exclusively to Homer Community Schools. Established 1994.

### FUND FOR HOMER

Grants awarded from this fund focus on key areas of priority within our community. Established 1994.

### GRACE FALCONER KLEIS ENDOWMENT FUND

Grace Falconer Kleis opened Falconer’s store, a very popular women’s clothing store, in Homer in 1945. Over the years many young people gained their work ethic from Grace’s examples and learned the criteria for quality customer service. This fund was established by Grace as a token of appreciation and thanks for her former customers and the 29 1/2 years Falconer’s business thrived in Homer. Established 2007.

### HOMER AREA COMMUNITY FOUNDATION OPERATING ENDOWMENT FUND

This fund has been established to support the future operating needs of the Foundation. Established 1999.

### HOMER AREA COMMUNITY YOUTH FUND

Grants from this fund are awarded by a committee of Homer community youth. This fund provides young people with real experiences in philanthropy. Established 1995.

### HOMER ARTS ENDOWMENT FUND

This fund has been established to maintain and support the arts in the Homer community. Established 1999.

### HOMER COMMUNITY BASED PRESCHOOL ENDOWMENT FUND

This fund has been established with hopes to ensure sustainability for the program. Established 2006.

### HOMER PUBLIC LIBRARY ENDOWMENT FUND

Grants from this fund will be awarded for maintaining and supporting the Homer Public Library. Established 2001.

### HOMER SAVE THE LAKE ENDOWMENT FUND

This fund was established to address future lake restoration needs. Established 2005.

### PAUL & MAURINE SINCLAIR AND YOUTH ENDOWMENT FUND

This fund was established by the estate of Maurine Sinclair. Paul and Maurine were both raised in Homer and graduated from Homer High School. Mr. Sinclair had a career in banking and Mrs. Sinclair was a kindergarten teacher. Youth were important to the Sinclair’s. They hosted several foreign exchange students in their home and Mrs. Sinclair was the first guardian of the Campfire Girls in Homer. Grants from the fund may be used for a scholarship for a Homer High School graduate and/or programs benefiting the youth of Homer. Established 2007.

## NON-ENDOWED FUNDS

### HOMER AREA COMMUNITY FOUNDATION OPERATING FUND

This fund has been established to support the current operating needs of the foundation. Established 1995.

### HOMER ARTS COMMUNITY PROJECT FUND

This fund has been established to promote and support the arts in the Homer community. An Arts Advisory Committee has been formed and is presenting a sixth season of arts programming in our community. Established 1999.



# Homer Area Community Foundation Funds

## NON-ENDOWED FUNDS

### HOMER RECYCLING FACILITIES COMMUNITY PROJECT FUND

This fund has been established to promote and support the building and operation of a new Recycling Center. Established 2003.

### HOMER SAVE THE LAKE COMMUNITY PROJECT FUND

This fund was established to address current lake restoration needs. Established 2005.

### HOMER VILLAGE COUNCIL COMMUNITY PROJECT FUND

This fund was established by donations from the Village Council Members to be used for special projects in the community. Established 2008.

### HOMER SPECIAL EVENTS FUND

This fund was established for the holiday dinner/dance. Established 2006.

## ENDOWED DONOR ADVISED FUNDS

### BARTON FARM CO. ENDOWMENT FUND

This fund was established by Roxanne Barton. Roxanne, her husband Bruce, and his parents, Mike and Kathy Barton want to thank the Homer community for their support of Barton Farms. In addition, the Bartons feel very fortunate that they have been able to employ talented students from the Homer area throughout the year. Established 2006.

### CORTRIGHT FAMILY EDUCATIONAL ENRICHMENT FUND

Established in memory of Nancy Cortright. This fund focuses on educational needs within Homer Community Schools. Established 2000.

## ENDOWED DONOR ADVISED FUNDS

### FOLK FAMILY FUND

Established in memory of lifelong Homer residents Robert & Doris Folk. Established 1999.

### MILLER FAMILY FUND

Established in memory of Homer residents, James Miller and Lucy Miller. Established 2000.

### PETREDEAN FAMILY FUND

Established by the George and Betty Petredean Family. Established 2000.

### PS FOOD MART CHARITIES FUND

Established with proceeds from the PS Food Mart stores to support the ongoing commitment to local charity and community programs. Established 2010.

### ROCKWELL FAMILY FUND

Established in memory of Ben and Elsie Rockwell, who were active community members. Established 2000.

### SWOPE FAMILY FUND

Established by Stan and David Swope and families. Established 2000.

### WARREN AND MYRT DEXTER FUND FOR CHILDREN

Established by Warren Dexter, an educator who has worked in the Homer Community Schools, and his wife. This fund focuses on key areas of priority in the community with a special emphasis on children. Established 2000.



## SCHOLARSHIPS

THE HOMER AREA COMMUNITY FOUNDATION HOSTED OUR ANNUAL SCHOLARSHIP RECEPTION ON APRIL 26, 2010. SCHOLARSHIP APPLICATIONS ARE REVIEWED BY THE FOUNDATION BOARD OF TRUSTEES AND OUR SCHOLARSHIP COMMITTEES. SCHOLARSHIP APPLICATIONS ARE AVAILABLE AT THE HACF OFFICE, HOMER COMMUNITY SCHOOL COUNSELING OFFICE OR OUR WEBSITE. **APPROXIMATELY \$29,750 WAS AWARDED IN SCHOLARSHIPS THIS FISCAL YEAR.**

### **BARTON FARM CO. SCHOLARSHIP FUND \$2,000**

*Andrew Ayres, Steven Osborn*

Yearly scholarships are awarded to Homer Community Schools or surrounding area graduates, based on financial need. The Barton Farm Co. Scholarship was established by Roxanne Barton. Roxanne, her husband Bruce, and his parents Mike and Kathy Barton want to thank the Homer community for their support of Barton Farms. In addition, the Barton's feel very fortunate that they have been able to employ talented students from the Homer area throughout the years. Because the Barton's believe strongly in the importance of education and the continued excellence of our local schools, this scholarship has been established. Established 2007.



Scholarship recipient Alissa Sanders receives the Crandall Family Scholarship. Pictured with Phil Crandall.

### **BESSIE L. SMITH SCHOLARSHIP FUND \$500**

*Kathryn Woodliff*

Yearly scholarships are awarded to Homer Community Schools graduates based on scholarship, merit and community participation. Established in memory of Bessie L. Smith, a lifelong Homer resident, educator, active community member, and mother of five Homer High School graduates. Established 2000.

### **BETTY PETREDEAN SCHOLARSHIP FOR THE ARTS FUND \$4,000**

*Kathryn Woodliff*

*Renewal: Allyson McMeeking*

Yearly scholarships are awarded to Homer Community Schools graduates and alumni and are renewable for an additional three years based on specific criteria. This scholarship was established in memory of Betty who was a music education major, pianist, organist, vocalist, and a lover of the fine arts. Established 2005.

### **CRANDALL FAMILY SCHOLARSHIP FUND \$500**

*Alissa Sanders*

Yearly scholarships are awarded to Homer Community Schools graduates based on financial need, strong academic performance, involvement in the community, and strong character. This scholarship was established by Larry Crandall in memory of his wife, Mary Dibble-Crandall, and his parents Mason and Marjorie Crandall. Larry feels fortunate that the G.I. Bill made a provision for his college education. This scholarship is established so that others also might be able to continue their education beyond high school. Established 2006.

### **FFA SCHOLARSHIP FUND**

*No applications received*

Yearly scholarships are awarded to Homer Community Schools graduates and alumni who participated in the Homer FFA for one or more of their high school years. Students planning to pursue an education in agricultural science will be given a preference. Students may apply for renewal. Established 2002.

### **GEORGE AND BETTY PETREDEAN SCHOLARSHIP FUND \$8,000**

*Brock Nelson*

*Renewals: Courtney Thurston, Alicia Prater, Zach Allen*

Yearly scholarships are awarded to Homer Community Schools graduates and alumni and are renewable for an additional three years based on specific criteria. Recipients should exhibit strong academic performance, leadership skills, and community involvement. George and Betty feel very fortunate that they had caring adults who encouraged and assisted them in pursuing a college education. Established 1994.

### **HARRY & LINDA LUCYSHYN MEMORIAL SCHOLARSHIP FUND \$500**

*Andrea Shank*

Yearly scholarships are awarded to Homer Community Schools graduates. Consideration is given to those students who may be pursuing careers in audiology, sciences, agriculture and veterinary medicine. This scholarship was established in memory of Harry and Linda who were graduates of Homer High School and both attended Michigan State University. Established 1997.



# Scholarships

## HOMER ACADEMIC BOOSTER CLUB SCHOLARSHIP FUND \$500

*Samantha Barton*

Yearly scholarships are awarded to Homer Community Schools graduates based on potential to succeed in a college curriculum, financial need, character, and volunteer involvement. This scholarship was organized in 1983 by parents, teachers, and administrators to promote increased parent and non-parent involvement in the Homer Community Schools academic program. The ABC fund continues to sponsor the Student of the Month program and Alumnus of the Year program, as well as maintain the Academic Hall of Fame. Established 2006.

## PAUL & MAURINE SINCLAIR SCHOLARSHIP & YOUTH ENDOWMENT FUND \$500

*Jonathon Warner*

This fund was established by the estate of Maurine Sinclair. Paul and Maurine were both raised in Homer and graduated from Homer High School. Mr. Sinclair had a career in banking and Mrs. Sinclair was a kindergarten teacher. Youth were important to the Sinclairs. They hosted several foreign exchange students in their home and Mrs. Sinclair was the first guardian of the Campfire Girls in Homer. Grants from the fund may be used for a scholarship for a Homer High School graduate and/or programs benefiting the youth of Homer. Established 2007.

## PHIL DUFF SCHOLARSHIP FUND \$250

*Cady Linnabary*

Yearly scholarships are awarded to Homer Community Schools graduates based on scholarship, merit and community participation. This scholarship was established in memory of Phil Duff, former Homer Elementary School Principal and active community member. Established 2001.

## RAYMOND R. AMSLER SCHOLARSHIP FUND \$1,000

*Andrea Shank*

Yearly scholarships are awarded to Homer Community Schools graduates with a potential to succeed in a college curriculum. Ray had many fond memories of his years in Homer and his school time. He established the scholarship to help Homer students attend college. Established 2007.

## ROBERT AND DORIS FOLK SCHOLARSHIP FUND \$6,000

*Wade Brodock*

*Renewals: Cassidy Watts, Drew Heath*

Yearly scholarships are awarded to Homer Community Schools graduates and are renewable for an additional three years based on specific criteria. Recipients should demonstrate financial need, leadership skills, community involvement, and academic performance. This scholarship was established in memory of Robert and Doris who were lifelong Homer residents, and parents of two Homer Community Schools graduates. Bob and Doris have given back to the community in so many ways. Establishing this scholarship is a way to make sure their efforts continue. Established 1999.



Wade Brodock receives the Robert & Doris Folk Scholarship, presented by Richard Folk.

## SLF/BLAIR SCHOLARSHIP FUND \$6,000

*Rachelle Meeks*

*Renewals: Wesley Grundemann, Rebecca Barton*

Yearly scholarships are awarded to Homer Community Schools graduates and are renewable for an additional three years based on specific criteria. Recipients should exhibit solid character, commitment to community service, philanthropy, and financial need. This scholarship combines the funds of the Homer Student Loan Fund (SLF) and the Blair Scholarship Fund. Past Homer superintendent Everett Highland started the Student Loan Fund in 1959 to provide loans to Homer High School graduates to help them further their education. The Blair Scholarship was started in 1977 with funds from the estate of Bess Blair as donated by her sister Maude. Both sisters were born in Homer and were descendents of Homer's first doctor. Bess taught in the Homer school system. Maude was a life-long educator, and both sisters were strong supporters of education. Established 2001.



Rachelle Meeks receives the SLF/Blair Scholarship, presented by Monica Hopp.

## Grants

The Homer Area Community Foundation awards semi annual grants from the endowment funds of Fund for Homer, Bessie Edwards Education Fund, and the Youth Fund. Grant applications are reviewed by the foundation Board of Trustees and the members of the Youth Advisory Committee. Grants for less than \$200 are considered mini grants and can be submitted at any time. Grant applications are available at the HACF office or our website.

**Approximately \$51,915 was awarded in grants this fiscal year.**

### BESSIE EDWARDS EDUCATION FUND

**Homer Community Schools ~ \$2,000**  
Bullying Program

**Homer Community Schools ~ \$3,000**  
Middle School Auditorium  
Sound System

### DONOR ADVISED FUNDS

**Folk Family Fund ~ \$3,250**  
Homer Community Schools-Post-Prom  
Mystery Trip

Middle School Auditorium Sound  
System

**Swope Family Fund ~ \$500**  
Homer Community Schools Post-Prom  
Mystery Trip

### FUND FOR HOMER

**Homer United Methodist Church ~ \$240**  
Positive Parenting Workshops

**Village of Homer ~ \$5,500**  
DDA Seed Money

**Homer Caring & Sharing Food Bank ~ \$1,500**  
Proceeds from Holiday Benefit Dance

**Homer Community Schools ~ \$3,000**  
Middle School Auditorium  
Sound System

### GRACE FALCONER KLEIS ENDOWMENT FUND

**Village of Homer ~ \$3,000**  
DDA Seed Money

### PS FOOD MART CHARITIES FUND

**Food Bank of South Central Michigan ~ \$19,550**  
Food Assistance

**Toledo Northwestern Ohio Food Bank ~ \$9,975**  
Food Assistance

### YOUTH FUND

**Homer Community Schools ~ \$200**  
Flag Corp Flags and Action Ribbons

**Homer Community Schools ~ \$200**  
Theatre Production

**Village of Homer ~ \$3,500**  
DDA Seed Money

**Homer Community Schools ~ \$1,500**  
Post-Prom Mystery Trip

**Homer Community Schools ~ \$7,000**  
Middle School Auditorium  
Sound System



Grant recipients at Homer Area Community Foundation's 2010 Grant and Scholarship Reception. Left to right, Amanda Hagerman, Trixie Wint, Susan Michael, Jennifer Johnson, and Katrina Petredean.

## Youth Advisory Committee (YAC) 2010-2011

The Youth Advisory Committee is a committee of youth that are dedicated to effective grantmaking, addressing youth issues and promoting volunteerism and philanthropy. Members of the YAC attend regularly scheduled meetings, take part in special projects and activities, volunteer and attend community foundation events, learn about youth needs within our community and grant money for youth projects. Some of the activities include:

grantmaking, adopt-a-family program at Christmas, Homer Recycling Center, Arbor Day, and graduation celebration. Each year YAC members from Albion Community Foundation, Athens Area Community Foundation, Battle Creek Community Foundation, Homer Area Community Foundation, and the Marshall Community Foundation have an opportunity to meet and network during our training with the Council of Michigan Foundations (CMF).



Lindsey Boden, Brooke Ebersole, Tyler George, Donovan Green, Mackenzie Green, Robbie Johnson, Samantha Johnson, Joshua Marvil, Stephanie Osborn, Kelee Pace, Justin Rea, Molly Renfroe, Gary Richardson, Grant Richardson, Brock Ridgeway, Tyler Ridgeway, Preston Sherman, Nate Sitkiewicz, Luke Swope, Ashley Taylor, Lauren Tompkins, Kayle Wilson, Nicole Wilson



Celebrating Arbor Day in April 2011.



Lending a hand at the Homer Recycling Center.



Left: Josh Marvil, Kurt Swope, Mallory Tackett, Rob Ridgeway and Samantha Johnson enjoy the Post-Prom Mystery Trip!

# Memorial Contributions



## BESSIE EDWARDS EDUCATION FUND

CAROL BARTHOLIC  
Cheryl Bartholic

## BESSIE SMITH SCHOLARSHIP FUND

BOB SMITH  
Richard & Janet Folk  
Ruth E. Menor  
Charlotte Smith  
Wesley & Deanna Woodliff

## HARRY & LINDA LUCYSHYN SCHOLARSHIP FUND

HARRY & LINDA LUCYSHYN  
Peter & Barbara Lucyshyn

## HOMER ACADEMIC BOOSTER CLUB SCHOLARSHIP FUND

AARON ACKER  
Ann Acker

## HOMER AREA COMMUNITY FOUNDATION UNRESTRICTED FUND

DONNA SWOPE  
Doug Vanderford

GLEN HORTON  
Ronald Schaberg

FRANCES YECK  
David Yeck

MAURICE & ELSIE DYE  
Cathy Roberts

DONNA SWOPE  
Cathy Roberts

RUTH HAMILTON  
Cathy Roberts

DUANE RICHARDSON  
Cathy Roberts

## HOMER AREA COMMUNITY FOUNDATION YOUTH FUND

KATHY MILLS  
Kevin & Amy Richardson & Family

JIM HICKERSON  
Kevin & Amy Richardson & Family

BETTY SHORKEY  
Homer Senior Center



## FRED VANDERLIP

Henry & Ria Orman

## PAUL KEIFER

Homer Senior Center

## HOMER FIREFIGHTERS ASSOCIATION

### PHIL TAYLOR

Larry & Donna Bowser  
Brent & Cindi Winchell  
Jack & Sidnee McKinney  
Peggy Drumm  
David & Catherine Smith  
Danny Jones & Belinda Molihan Jones  
Richard & Jean Smith  
Joe & Colleen Streets  
Richard & Carol Fogel  
Bruce & Christine Miller  
Phillip & Amy Powell  
Duane & Jo Ann Rockey  
Donald & Paula Pittelkow  
Bryan & Michele Thomas  
Chris & JoAnne Miller  
Lynn & Fran Cook  
Philip & Luanna Miller  
Merle & Susan Johnson  
Verdel Odgaard  
Alan & Amy Shore  
Patricia Fisher  
David & Karen Suffecool  
Steven & Deborah Engler  
Elaine Lobb  
Michael & Shelley Temple  
Robert & Susan Rhodes  
Michael & Connie Gundlach  
Norman & Mendi Riddle  
Nora Erb  
Jim & Nancy Norton  
Steve & Terri Fruth  
Larry & Julie Wirebaugh  
David & Denise Whitta  
Benjamin & Helen Pratt  
James & Lois Haskins  
John & Kerri Boris  
Nationwide Mutual Insurance Company  
Melvin & Winnie O'Dell  
Jerry & Barb Bussing  
Elden & Shirley Winchell  
David & Rosemarie Butler



# Memorial Contributions



Bob & Ruth Taylor  
Charles Craven  
Les & Jane Mallery  
Art & Karen Smith  
Gary Shrontz  
Jerold & Liz Johnson  
Allen & Marva Johnson  
Tom & Mary Bates

**MARILYN DOUGLAS**  
Rollin & Rose Richardson

## **HOMER HISTORICAL SOCIETY ENDOWMENT FUND**

**LORENE YOST**  
Eliza Hopkins  
Chris & JoAnne Miller

**GLEN HORTON**  
Eliza Hopkins

**ROBERT L. SMITH**  
Eliza Hopkins

## **HOMER PUBLIC LIBRARY ENDOWMENT FUND**

**KATHY MILLS**  
Floyd & Jean Cook-Hughes  
Jane Parks Oden  
Frank & Bonnie Walters

**JUDY SMITH NICHOLS**  
Floyd & Jean Cook-Hughes  
John & Kathleen Oelslager

**ROSE VANDERLIP**  
Julie Burkwalt

**EILENE LADD**  
Don & Mary Smith  
Junior & Lil Butler  
Dorothy Wade  
Jim & Bonnie Fogel  
Doug & Linda Tasker  
Mike & Lisa Kohn  
Rodney & Mary Horton  
Stan & Judy Swope  
Gene & Beverly Hoaglin  
Bernita Edgerton  
Leon & Joan Brodock  
Virginia Zadicgian  
Jack & Beverly Swope  
Lowell & Denice Crane  
Doug Vanderford  
Thad & Kathy Sizemore

**BERNITA EDGERTON**  
Charlie Craven  
Nancy Frye  
Stephen & Priscilla Gehrig  
Fred & Rosemary Ham  
Patsy Jones  
Mary Lou McCullough  
Carol Stewart  
Sue Timmins  
Lorraine Lewis  
Edward & Leslie Jenkins, Jr.  
Trixie Wint  
Bob & Hildegard Mintz  
Ron Di Salvio & Carol Petredean-Di Salvio  
Leona Reid

**KAY VANDERFORD**  
Doug Vanderford

**AARON ACKER**  
Ann Acker

**FRANK BARTHOLIC**  
Cheryl Bartholic

**CLAYTON A. HOPP**  
Monica Hopp

**MARY E. & MAURIE WILDT**  
William & Bonnie Goodrich

**BOB SMITH**  
Rollin & Rose Richardson  
Litchfield Grain Co., Inc.

**DONNA STACY**  
Martha Bell

**ELSIE DYE**  
Cathy Roberts

## **RAYMOND AMSLER SCHOLARSHIP FUND**

**RAYMOND AMSLER**  
Ron Di Salvio & Carol Petredean-Di Salvio

## **ROCKWELL FAMILY FUND**

**BEN & ELSIE ROCKWELL**  
Philip & Luanna Miller

**BEN & MILDRED WILSON**  
Philip & Luanna Miller

**LORENE YOST**  
Philip & Luanna Miller

## **SLF/BLAIR SCHOLARSHIP FUND**

**MAUDE & BESS BLAIR**  
Homer Historical Society

**LOUISE LEACH WILLIAMS**  
Monica Hopp



## Honorary Contributions

### BESSIE EDWARDS EDUCATION FUND

#### ERIC FOGEL (RETIREMENT)

Ann Bryan Nelson

#### HENRY ORMAN (RETIREMENT)

Ann Bryan Nelson

#### ART WELCH (RETIREMENT)

Ann Bryan Nelson

#### GINNY WARNER (RETIREMENT)

Ann Bryan Nelson

#### MELISSA MCKENNA (RETIREMENT)

Ann Bryan Nelson

#### CAROL STEWART (RETIREMENT)

Ann Bryan Nelson

#### JEFF DAGLOW (RETIREMENT)

Ann Bryan Nelson

### BESSIE SMITH SCHOLARSHIP FUND

#### DON & MARY SMITH (ANNIVERSARY)

Chris & JoAnne Miller

Richard & Judith Kinney

Dorothy Wade

Gareth & Karen Smith

Leon & Joan Brodock

William & Gail Burkswalt

Elaine Cornellier

Phillip & Ann Davidson

Robert & Betty Fleming

Eric & Teri Fogel

Harry & Nancy Griffiths

Dale & Cheryl Hague

Anna Belle Hunt Comins

Jay & Barb Landis

Tom & Sally Miller

Nancy Putnam

Earl & Elizabeth Schultz

Bob Smith

Charlotte Smith & Family

Jack Smith

Connie Sundberg

Terrance & Sandra Klump

Art & Karen Smith

Jill Smith

Jackie Smith

Karen Schwartz

### HOMER ARTS COMMUNITY PROJECT FUND

JOAN WAGONER

Claire Elton

### HOMER AREA COMMUNITY FOUNDATION UNRESTRICTED FUND

PATRICIA L. LINTON & THOMAS PALMER  
(MARRIAGE)

Karen Yankie

### HOMER PUBLIC LIBRARY ENDOWMENT FUND

ROBERT LOVITT

Floyd & Jean Cook-Hughes

### HOMER RECYCLING COMMUNITY PROJECT FUND

KATRINA PETREDEAN (BIRTHDAY)

Ron Di Salvio & Carol Petredean-Di Salvio



Bessie Smith

## How you can make a difference

### Payroll Deduction Program

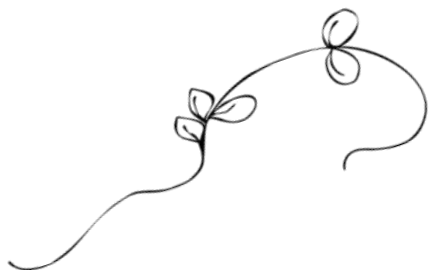
The payroll deduction program was established so that local community members could give back to the community in small increments through the payroll program of their local employer.

Current donations to the payroll deduction program are made by employees of Homer Community Schools, Homer Village Council and Trojan Heat Treat. This fiscal year, the contributions have totaled approximately **\$8,055.50** to support various philanthropic activities throughout the Homer community.

We would be happy to work with your employer to establish a payroll deduction program through the Homer Area Community Foundation. Please contact our office for further information

### IRA Charitable Rollover

Individuals aged 70 1/2 and older can donate up to \$100,000 from their Individual Retirement Accounts (IRA) to public charities without having to count the distributions as taxable income. They can still claim it as a deduction for 2010, even if they make the contribution by the end of January 2011.



### TAX ADVANTAGES

The Michigan Community Foundation Tax law permits a taxpayer to reduce Michigan Income Tax or Single Business Tax liability (through December 2011) by a credit of 50% of the amount contributed to a community foundation, subject to a maximum credit of:

- \* \$100 for an individual filing singly (for a \$200 donation)
- \* \$200 for a married couple filing jointly (for a \$400 donation)
- \* \$5,000 or 10% of tax liability before claiming any credits, whichever is less, for a resident estate or trust (for a 10,000 gift)
- \* \$5,000 or 5% of tax liability before claiming any credits, whichever is less, for taxpayers filing Michigan Single Business Tax returns (for a \$10,000 gift)

For taxpayers that itemize, the contributions may also be deductible for Federal Income Tax. Because we are a public charity, a gift qualifies you for the highest charitable deduction available.

### How to Include in Your Will

It is not complicated to include a bequest to the Homer Area Community Foundation in your will. You may instruct your legal counsel to include the following in your instrument:

“I give, devise and bequeath the following \_\_\_\_\_ (described assets which are the subject of the bequest; for example, a stated sum or the residue of the estate) to the Homer Area Community Foundation, a Michigan non-profit corporation. This gift shall be known as the \_\_\_\_\_ Fund” (you choose the name of the fund). If you want your bequest to be applied to an area of charitable interest or to a specific organization, add the following: “This fund shall be devoted to the support of \_\_\_\_\_.”

If you have included the Foundation in your estate plan or are interested in making a future gift to the Homer Area Community Foundation, please contact our office at 517.568.3495.

### LEAVING A LASTING MEMORY

On behalf of the Homer Area Community Foundation, we would like to thank the following individuals for providing and helping to ensure the quality of life for future generations.

**Richard & Janet Folk**  
**Estate of Doris Folk**  
**George Petredean**

If you would like further information about how to include the Foundation in your will, please contact us.

## General Contributions



### **BARTON FARM CO. ENDOWMENT**

Bruce & Roxanne Barton

### **BARTON FARM CO. SCHOLARSHIP FUND**

Mike & Kathy Barton  
Bruce & Roxanne Barton

### **BESSIE EDWARDS EDUCATION FUND**

Holly Blashfield  
Erik Baum  
Melissa McKenna  
Randy Shank  
Arthur Welch  
Kristen Wilkerson  
Julie Yeider

### **BESSIE SMITH SCHOLARSHIP FUND**

Pat & Deb Miller

### **FOLK FAMILY FUND**

Folk Oil Company, Inc.  
Carol Stewart

### **GEORGE & BETTY PETREDEAN SCHOLARSHIP FUND**

George J. Petredean

### **HARRY & LINDA LUCYSHYN SCHOLARSHIP FUND**

Greg Lucyshyn  
Leo Sensel

### **HOMER ACADEMIC BOOSTER CLUB SCHOLARSHIP FUND**

Michelle Allison  
Erik Baum  
Beverly Betz  
Renee Cribbins  
Libbi Dodd  
Kathy Grundemann



Melissa McKenna  
Kathy Mills  
Barb Ramirez  
Randy Shank  
Duane Sitkiewicz  
Susan Vincent  
Virginia Warner  
Arthur Welch  
Julie Yeider

### **HOMER AREA COMMUNITY FOUNDATION OPERATING ENDOWMENT FUND**

Ron Di Salvio & Carol Petredean-Di Salvio  
Chris & JoAnne Miller  
Rachel Maksimchuk

### **HOMER AREA COMMUNITY FOUNDATION OPERATING FUND**

Dick & Bea Walters  
Gary & Gwen Sherman

### **HOMER AREA COMMUNITY FOUNDATION UNRESTRICTED FUND**

Holly Blashfield  
George Strander & Bindu Madhok  
Arthur & Kathy Thomas

### **HOMER HISTORICAL SOCIETY ENDOWMENT FUND**

Homer Historical Society  
Chris & JoAnne Miller

### **HOMER AREA COMMUNITY FOUNDATION YOUTH FUND**

Doug & Susan Cook  
Erik Baum  
Holly Blashfield  
Renee Cribbins  
Jennifer Johnson  
Kathy Mills  
Michael Murphy  
Julie Raysin

# General Contributions



## HOMER FFA ALUMNI SCHOLARSHIP FUND

Wells Equipment

## HOMER FIREFIGHTERS ASSOCIATION

Homer Fire Department

## HOMER PUBLIC LIBRARY ENDOWMENT FUND

Fred & Mary Jane Saxton  
Robert & Joyce Tuck  
Gary & Betsy Crist  
Viola Spradlin  
Beverly Betz  
Mark Smith  
Bill & Bonnie Goodrich

## HOMER RECYCLING FACILITIES COMMUNITY PROJECT FUND

Pat & Deb Miller  
Gary & Betsy Crist

## HOMER SAVE THE LAKE COMMUNITY PROJECT FUND

Pat & Deb Miller

## HOMER VILLAGE COUNCIL COMMUNITY PROJECT FUND

Chris Miller  
Jeff Sherman  
Mike George  
Jewell Burkwalt  
Phillip Robinson  
Mike Warner  
Brent Michael

## MILLER FAMILY FUND

Pat & Deb Miller  
Chris & JoAnne Miller  
Joe & Angala Miller  
Margaret Michael



## PETREDEAN FAMILY FUND

George J. Petredean

## PHIL DUFF SCHOLARSHIP FUND

Holly Blashfield  
Renee Cribbins  
Sharon Schrock  
Virginia Warner

## PS FOOD MART CHARITIES ENDOWMENT FUND

Richard & Janet Folk  
Folk Oil Company, Inc.  
Convenience King

## ROBERT & DORIS FOLK SCHOLARSHIP FUND

Richard & Janet Folk

## ROCKWELL FAMILY FUND

Rick & Karen Rockwell

## SLF/BLAIR SCHOLARSHIP

Holly Blashfield  
Barb Ramirez

### A NOTE TO OUR DONORS

A sincere effort has been made to accurately pay tribute to each contributor in this publication. However, it is possible that names have been inadvertently omitted or incorrectly listed. If you notice an error, please accept our apology. It would be greatly appreciated if you would call the Homer Area Community Foundation at 517.568.3495 with any changes.

Please remember that this annual report includes contributions made from **April 1, 2010 through March 31, 2011**. Any donations received after March 31, 2011 will be included in next year's annual report.

Thank you.

# Arts Contributions



## HOMER ARTS ENDOWMENT FUND

### *Mozart Level*

Ruth Smith

### *Classical Level*

### *Renaissance Level*

Folk Oil Company, Inc.  
The Homer Index  
Tom & Mary Jo Petredean  
Richard & Janet Folk  
Jack & Beverly Swope  
Ron Di Salvio  
Pat & Deb Miller

### *Expressionist Level*

Barton Farms  
Cascarelli's Inc.  
Trojan Heat Treat, Inc.  
Daphne's  
Fred & Rosemary Ham  
Dick & Bea Walters  
Eric Fogel



### *Romance Level*

Charles & Mary Savage  
Steel Products  
Terry & Sally Anderson  
The Insurance Place  
Stan & Judy Swope  
Gary & Betsy Crist  
Duane Sitkiewicz

### *Baroque Level*

County National Bank  
Dairy Delite  
Irvin's Hardware & Auto, Inc.  
Salon Essentials  
DJS Systems, Inc.  
Homer Community Schools  
Camp's Puppets  
Miller Brothers Manufacturing Co/RSB  
Oaklawn Hospital  
Rennco  
Bernie's  
Kathy Mills

## HOMER ARTS COMMUNITY PROJECT

### *Mozart Level*

Ruth Smith

### *Classical Level*

Chris & JoAnne Miller

### *Renaissance Level*

Folk Oil Company, Inc.  
The Homer Index  
Warner Publishing  
Ron Di Salvio

### *Expressionist Level*

Barton Farms  
Cascarelli's  
Trojan Heat Treat, Inc.  
Daphne's  
Eric & Teri Fogel

### *Romance Level*

Steel Products  
Terry & Sally Anderson  
Salon Essentials  
The Insurance Place  
Bruce & Roxanne Barton  
Clem & Dee Camp  
Sharon Dow  
Hillsdale Terminal

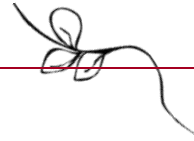
First Presbyterian Church

Virgie Ammerman  
Yes Now for Homer Committee

### *Baroque Level*

Howard Huffman  
County National Bank  
Dairy Delite  
Irvin's Hardware & Auto, Inc.  
DJS Systems, Inc.  
Homer Community Schools  
Camp's Puppets  
Miller Brothers Manufacturing Co/RSB  
Oaklawn Hospital  
Rennco  
Bernie's  
Mary Lou McCullough  
ReNae Anderson  
FMT Products, Inc.  
H & J Caldwell Trucking Inc.  
Jerry & Cindy Irvin  
Jim & Isabell Nazar  
Bonnie Marvil  
Hopps Pharmacy  
Thomas & Jill Grant  
Bellisima Boutique, LLC  
Claire Elton  
Paul & Bethany Patton  
Susan Vincent

# Arts Contributions



## **Other Donors**

Neil Landis  
Steve & Jennifer Coulter  
Eric & Linda Stemaly  
Tim & Jodie Anderson  
Henry & Ann Noller  
David B. Miller

## **Art in Public Places 2010 Merit Winners**



**Young Fives**  
Kane Blatter

**Kindergarten**  
Griffin Benson

**First Grade**  
Colton Blatter  
Amelia Signor  
Jena Sunkle

**Second Grade**  
Daniel Banda  
ShyAnn Craven

**Third Grade**  
Alissa Kittinger  
Shannon Stemaly

**Fourth Grade**  
Gabriel Avery  
Betsy Walker

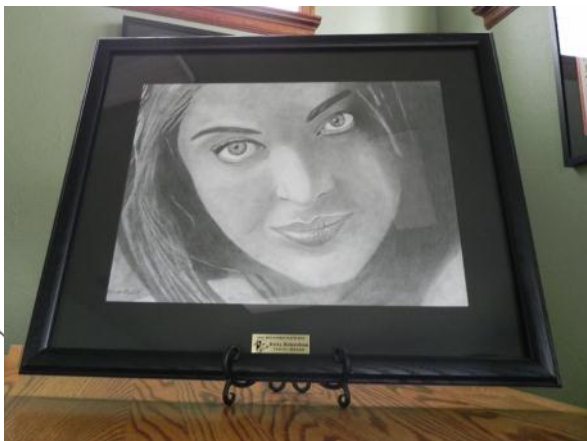
**Seventh Grade**  
Preston Sherman

**Ninth Grade**  
Brooke Ebersole  
Ashley Taylor

**Tenth Grade**  
Ricky Richardson  
Matt Wildt

**Eleventh Grade**  
Lindsey Boden  
Leah Renfroe  
Mallory Renfroe

**Twelfth Grade**  
Samantha Barton  
Kathryn Woodliff



# Homer Arts Advisory Committee



## TWELFTH SEASON

The Homer Arts Advisory Committee (HAAC) understands the **integral nature of the arts** in the health of the community. An endowment fund and community project fund have been established to ensure Homer is a **culturally rich and artistically excellent** community now and in the future.

HAAC was created as a **forum open to all people** who understand and enjoy the importance of the arts within a community and have a desire to further **the advancement of the arts** in the Homer area. All events are free to the public but are made possible through your donations.

HAAC meets once a month at the Homer Area Community Foundation office.

## Members

Mark & Jill Booth, Clem & Dee Camp, Jan Folk, June Hinkle, Neil Landis, Scott & Cheryl McMeeking, Richard Maples, JoAnne Miller, Carol Petređean-Di Salvia, Duane Sitkiewicz, Jerry & Daphne Stonebraker, and Sharon Warner

## BARNEYVILLE SKETCHES

**This publication features art and literary works** submitted by residents, former residents, employees, students and volunteers. Articles, essays, plays, poetry, short stories, drawings, paintings, photography, sculpture, and musical compositions are some of the featured talents of local artists. *Barneyville Sketches* is available to purchase at the HACF office.

## BENEFACTOR LEVELS

We invite you to support the arts of the Homer area by generously donating to our funds, which will provide tax advantages to the donor. Select from one of the six annual sponsor levels.

Mozart Society Honors	\$2,000
Classical Honors	\$1,000
Renaissance Honors	\$500
Expressionist Honors	\$250
Romance Honors	\$100
Baroque Honors	\$50





## COMMUNITY THEATER

The Community Theater was directed by Cheryl McMeeking and consisted of many local residents. They have shared their talent and love for theater with the community. The Community Theater is open to those with a love for acting.



Tracy McCullough & Richard Maples  
Photo by Neil Landis



Above: Richard Maples & Zach Allen  
Below: Justin Hovey-Wirebaugh, Jordan Cuatt & Jennifer Mackie  
Photos by Neil Landis



## COMMUNITY CHOIR

The Community Choir was directed and accompanied by Scott McMeeking and consisted of many members from the community and surrounding towns. They provided us with many enjoyable performances throughout the year. The Community Choir is open to those with a love for music.



Art in Public Places  
May 13, 2010  
Photo by Will Forgrave, Homer Index

## Holiday Benefit Dance

The Homer Area Community Foundation hosted an annual holiday dinner/dance to raise money for the Fund for Homer and Homer Caring and Sharing. **At the December 4, 2010 event, we raised approximately \$1,500 for the Fund for Homer and \$1,500 for the Homer Caring and Sharing.** The Homer Caring and Sharing is a joint ministry of the Homer United Methodist Church and the First Presbyterian Church of Homer. Caring and Sharing is located on Main Street with a thrift store and emergency food bank.



### Sponsors:

Dick & Bea Walters  
Tom & Sally Miller  
Wiley & Jennifer Masten  
Pat & Deb Miller  
Mike & Jeanne George  
Gene & Wendy Vail  
Clark & Allison Ritchie  
Jeff & June Hinkle  
Scott & Cammy Salow  
Miller Financial Services  
Jason & Rebecca Barnes  
Tom & Becky Crist  
Dennis Maksimchuk  
Rachel Maksimchuk  
Kevin & Amy Richardson  
Scott & Kathy Salow  
Scott & Missy Warner  
Bob & Judy Cascarelli  
Dave & Wendi Keathley  
Jerry & Daphne Stonebraker  
Scott & Kathy MacMillan  
Rick & Christy Boden  
Phil & Luanna Miller  
Sue Klassen

### Benefactor:

Rob & Lisa Ridgeway  
Tom & Sharon Rumsey  
Brent & Susan Michael  
Scott & Deb Pickens  
Gary & Betsy Crist  
Jeff & Carol Sherman  
George Petredean  
Kevin & Catherine Yates  
Wayne & Peggy Thomas  
Rick & Ruth Cooley  
Kirk & Terri Lee  
Steve & Babby Sherman  
Dan & Carolyn Miller



### Patron:

Stan & Judy Swope  
Mark & Teresa Larder  
Richard & Janet Folk  
Jack & Beverly Swope  
Monica Hopp  
Ron Di Salvio & Carol Petredean-  
Di Salvio  
Gary & Dawn Hackworth  
Kevin & Michelle Vandy Bogurt  
Chris & JoAnne Miller  
Jerry & Cindy Irvin  
Drew & Monica Bordner  
George J. Petredean  
Dave Swope



Tim Marvil, representing Homer Caring and Sharing, is presented with a check by Amy Richardson and Jan Folk.

### Other Donors:

Robin & Daphne Thurgood  
Marissa Willerick

# Community Foundations

## What is a Community Foundation?

A Community Foundation is a tax-exempt public charity organized and operated as a permanent collection of endowed funds for the long-term benefit of a defined geographic area. All 83 counties of Michigan are served by a Community Foundation.

## Why do people choose Community Foundations?

- \* We build endowment funds that grow and benefit our community forever  
*The principle balance of the fund is invested as a pool of assets, and grants are distributed from the earnings. This ensures that donors' gifts will continue to benefit future generations.*
- \* We help donors create an individual or family legacy  
*By establishing a fund, donating to existing funds, or including the Community Foundation in your estate planning, you are creating a legacy of caring that will make a lasting impact in the areas of the community for which you care most deeply.*
- \* We offer donor involvement in selecting charities  
*The Homer Area Community Foundation can direct your gift to your choice of 38 organizational funds, or you can establish a donor-advised fund, offering you more direct involvement in grantmaking.*
- \* We are a local organization meeting a broad range of changing local needs  
*The Homer Area Community Foundation has over 15 years of experience in identifying areas of need in the community. Grant proposals are reviewed to ensure that credible programming is delivered to the Homer community.*
- \* We provide a simple way to fulfill multiple charitable interests, with low-cost administration  
*Individuals can do something to benefit the community. A gift of any amount can be designated for a specific area of interest, general use, or in honor or memory of a loved one. Corporations and organizations can also make donations or establish funds to support their charitable intent.*
- \* We deliver personalized donor service; we're flexible and responsive to unique needs  
*Our staff and board is readily available to assist you and/or your financial advisor in meeting your charitable goals.*
- \* We accept a wide variety of assets  
*Donations to the Homer Area Community Foundation may include any variation or combination of assets, including cash, securities (stock), closely held stock, real estate (including residence), and insurance policies.*
- \* We offer maximum tax advantage  
*Donors to the Homer Area Community Foundation's permanent endowment funds can claim the Michigan Community Foundation Tax Credit through December 2011.*
- \* We can preserve donor intent even when community needs and organizations change  
*Through endowment funds, we are able to ensure that your original charitable intent is maintained forever.*
- \* We are known for prudent stewardship and investment practices  
*The Homer Area Community Foundation is fully accountable to the community. All operations are accountable to the Board of Trustees, comprised of community volunteers. Our records are public and our programs are monitored. An independent audit is done every year in addition to successfully meeting the Council of Michigan Foundations' measures of Standards for Community Foundations.*



## Homer Area Community Foundation Board of Trustees

Carol Petredean-Di Salvio, President \* Rachel Maksimchuk, Vice-President  
Richard Folk, Treasurer \* Holly Blashfield, Secretary \* Roxanne Barton, Trustee  
Rick Cooley, Trustee \* Jeanne George, Trustee \* Jill Grant, Trustee \* Cindy Kirkbride, Trustee  
Joshua Marvil, Trustee \* Joe Miller, Trustee \* Rob Ridgeway, Trustee



### Thank You To Our Donors

We are deeply indebted to all of our donors, volunteers and  
community partners.

Your support enables us to improve the quality of life  
throughout the Homer community!

*"Far away in the sunshine are my highest inspirations. I may not reach them, but I can look up and see the beauty, believe in them and try to follow where they lead."*

- Louisa May Alcott

### Homer Area Community Foundation

104 S. Hillsdale Street, P.O. Box 201

Homer, MI 49245

517.568.3495

[www.homeracf.org](http://www.homeracf.org)

[foundation@homeracf.org](mailto:foundation@homeracf.org)

For **good**. For **ever**.

